

January 25, 2018

08048 Version 3

## 2018 Clarity Plug-In Hybrid: PDI and New Model Service Information

Supersedes 17-093, dated December 9, 2017, to revise the information highlighted in **yellow**.

### AFFECTED VEHICLES

Year	Model
2018	Clarity Plug-In Hybrid

### REVISION SUMMARY

- Under PDI PROCEDURES, 19. Check the Portable Charging Cable, updated the charging status table in step 2.

### INTRODUCTION

This bulletin covers the pre-delivery inspection (PDI) of the 2018 Clarity Plug-In Hybrid. It includes these procedures:

1. Remove the Exterior Protective Coatings	11. Start the TPMS Calibration Process
2. Install the Fuses	12. Check the Tire Repair Kit
3. Remove the Interior Protective Coverings	13. Install the SBW Shifter Assembly Cover
4. Install the Floor Mats	14. Check Remote Climate Control Operation
5. Check the 12-Volt Battery	15. Check/Refresh the SiriusXM® Radio Dealer Demo Service
6. Check the Coolant Levels in the Radiator Reservoir and Inverter Cooling Reservoir	16. Check the ACC, LKAS, Collision Mitigation Braking System™, and Road Departure Mitigation Indicators
7. Check the Windshield Washer Fluid Level	17. Make Sure LaneWatch® Works
8. Install the Body Plugs	18. Check the Charge Time Setting
9. Install the Front License Plate Holder	19. Check the Portable Charging Cable
10. Set the Tire Pressures	20. Charge the High-Voltage Lithium-Ion Battery

To do a PDI of the navigation system, be sure to complete S/B 17-094, *2018 Clarity Plug-In Hybrid: PDI of the Navigation System*.

This bulletin also includes this new model service information:

1. Deceleration Paddle Selector	3. Windshield Wiper System
2. Charge Timer	4. Checking Battery Pack Capacity

**CUSTOMER INFORMATION:** The information in this bulletin is intended for use only by skilled technicians who have the proper tools, equipment, and training to correctly and safely maintain your vehicle. These procedures should not be attempted by “do-it-yourselfers,” and you should not assume this bulletin applies to your vehicle, or that your vehicle has the condition described. To determine whether this information applies, contact an authorized Honda automobile dealer.

## CLAIM INFORMATION

Reimbursement Time: 1.4 hours

NOTE: This time includes the PDI of the navigation system.

## PDI PROCEDURES

### **Before Starting**

Review these items:

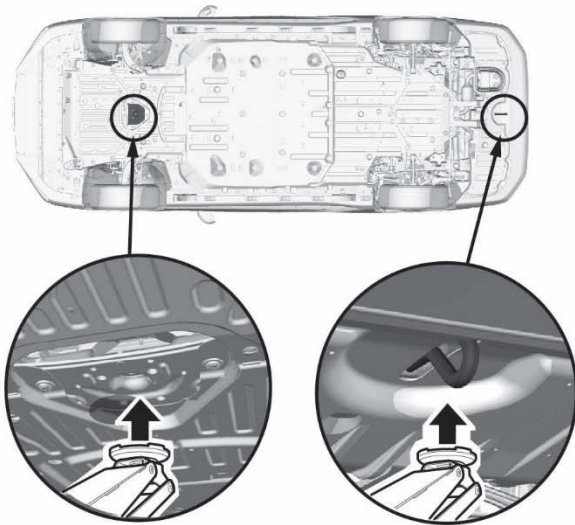
- Perfect Delivery documents, especially the information on battery maintenance and tire pressures
- Checklist in the *PDI and Final Delivery Checklist* booklet

Make sure you record the PDI on the appropriate pages of the checklist. The PDI is not done until this bulletin and the checklist are both complete. Note on the repair order any repairs or problems that cannot be fixed within a few minutes.

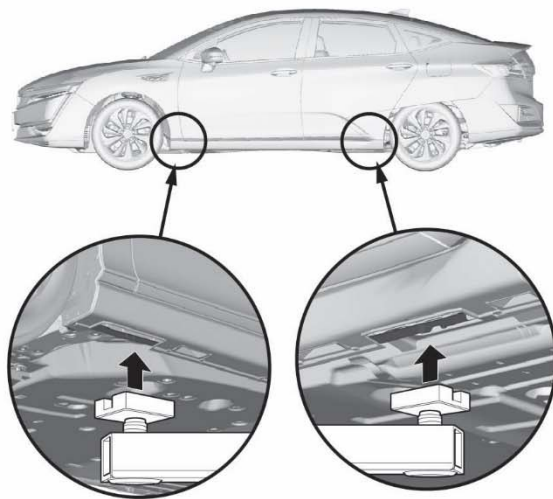
Remove all PDI items from the trunk and glove box.

Get familiar with the jacking and lift points shown below. Use of any other points can cause deformation/damage.

### **JACKING POINTS**



### **LIFT POINTS**



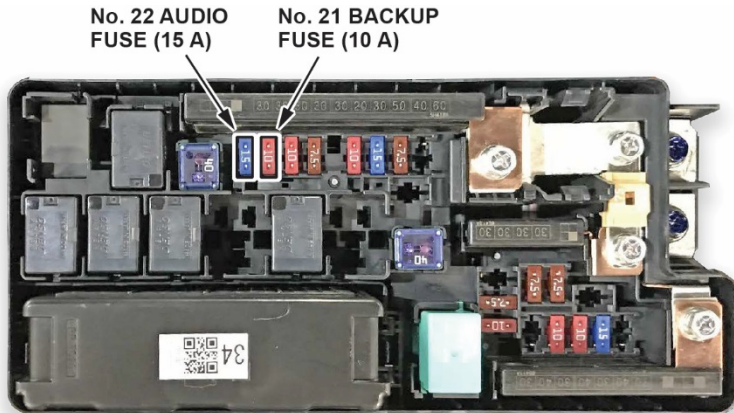
### **1. Remove the Exterior Protective Coatings**

Carefully remove all exterior protective coatings. See S/B 03-080, *Removal of Protective Coatings During PDI*.

## 2. Install the Fuses

To lower 12-volt battery drain during vehicle shipping, the No. 21 BACKUP (10 A) and No. 22 AUDIO (15 A) fuses are removed from the under-hood fuse box and stored in the glove box.

Make sure the ignition is turned to OFF, and wait for at least **1 minute**. Then, install the two fuses as shown.



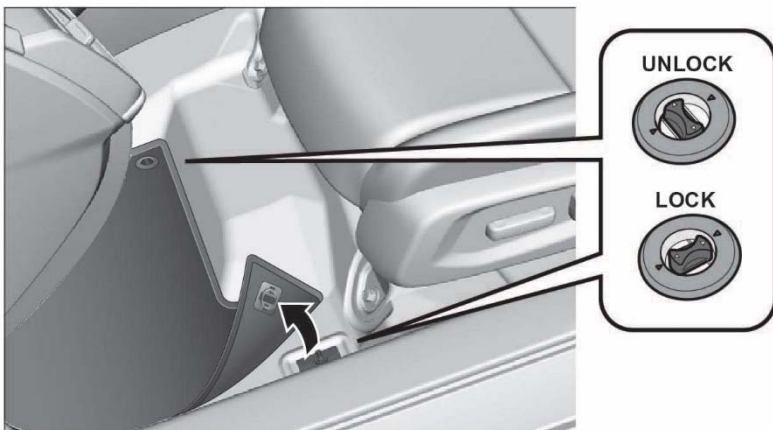
## Vehicle Interior

### 3. Remove the Interior Protective Coverings

There are several protective coverings on the interior trim pieces and on some areas of the carpet. Carefully remove all of them. Remove the coverings with clean hands to avoid soiling any surfaces.

### 4. Install the Floor Mats

Install the floor mats where they belong. Be sure to place the driver's floor mat eyelets over the anchors in the floor and turn the knobs **clockwise** to the lock position.



## Under-Hood (Ignition Turned to OFF)

### 5. Check the 12-Volt Battery

To ensure long battery life and that the customer gets a fully charged battery, you must check it at these times:

- When the vehicle first arrives at the dealership
- During the PDI (if done at a later date)
- At regular intervals (if stored)
- Just before vehicle delivery

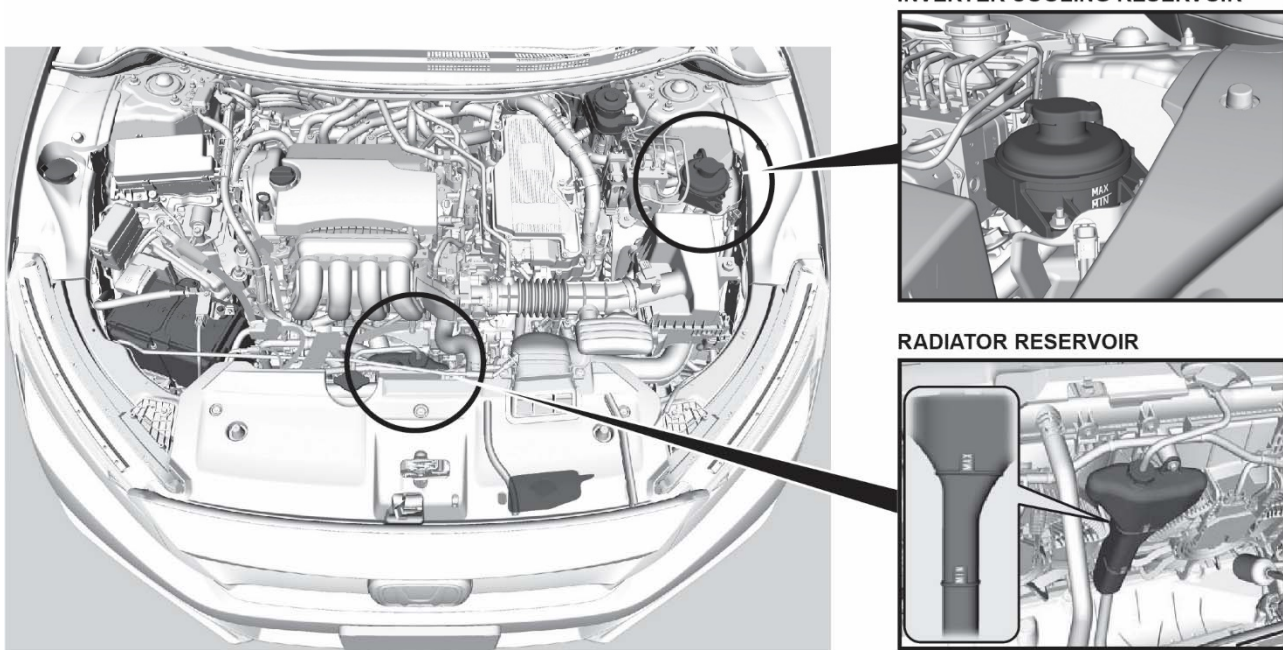
Test the battery with the ED-18 battery tester following S/B 88-023, *Battery Testing and Replacement*. If the ED-18 does not show **GOOD BATTERY**, charge the battery with the GR8 battery diagnostic station.

Write down the **GOOD BATTERY** 10-digit code in the *PDI and Final Delivery Checklist* booklet. During the PDI, write down the code in the "Under Hood - Engine Cold" section. Then, at vehicle delivery, test the battery again, charge if needed, and write down the new code in the "Final Inspection (At Delivery)" section.

NOTE: Make sure the ED-18 has the latest software installed before using it. See S/B 09-045, *ED-18 Battery Tester Update Information*.

### 6. Check the Coolant Levels in the Radiator Reservoir and Inverter Cooling Reservoir

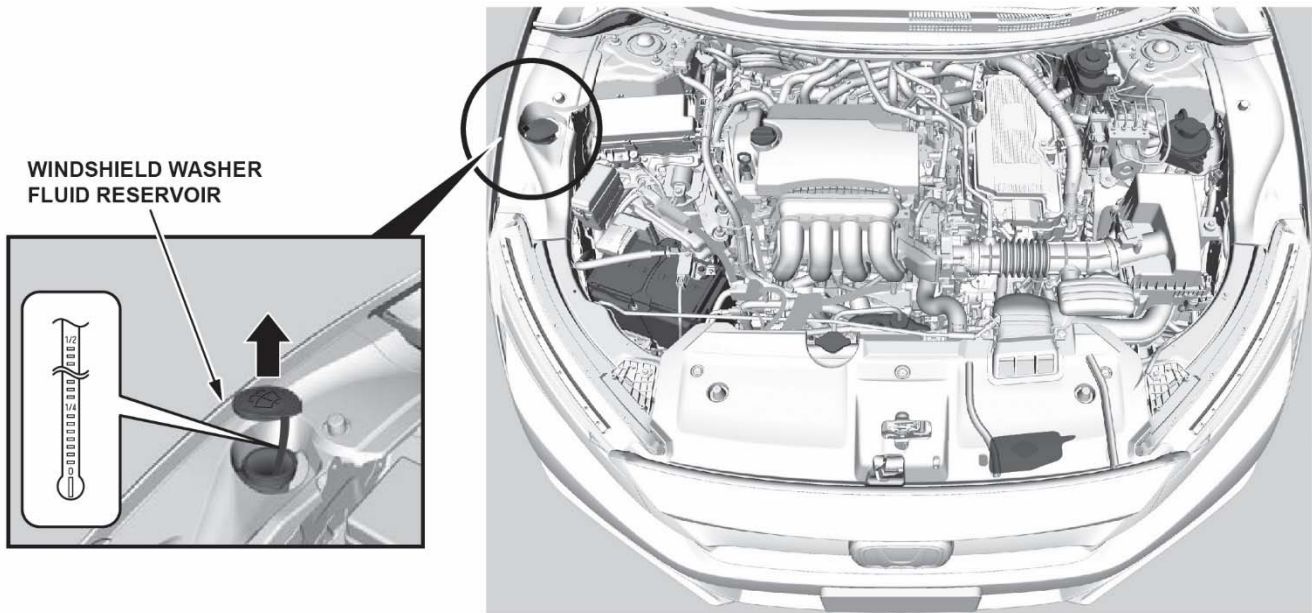
This vehicle has two cooling systems. One system cools the engine; the other one cools the inverter system.



Both systems use the usual Honda Long Life Antifreeze/Coolant Type 2. Be sure to top off the coolant levels if needed.

## 7. Check the Windshield Washer Fluid Level

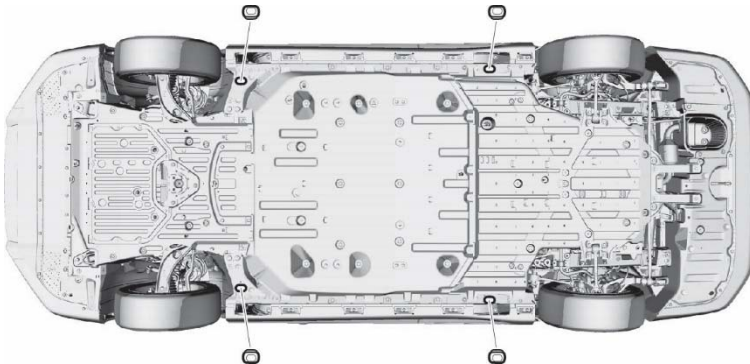
The windshield washer fluid reservoir is next to the right front fender. Make sure the fluid level is full.



### *Vehicle Exterior (Vehicle Raised to Full-Height)*

## 8. Install the Body Plugs

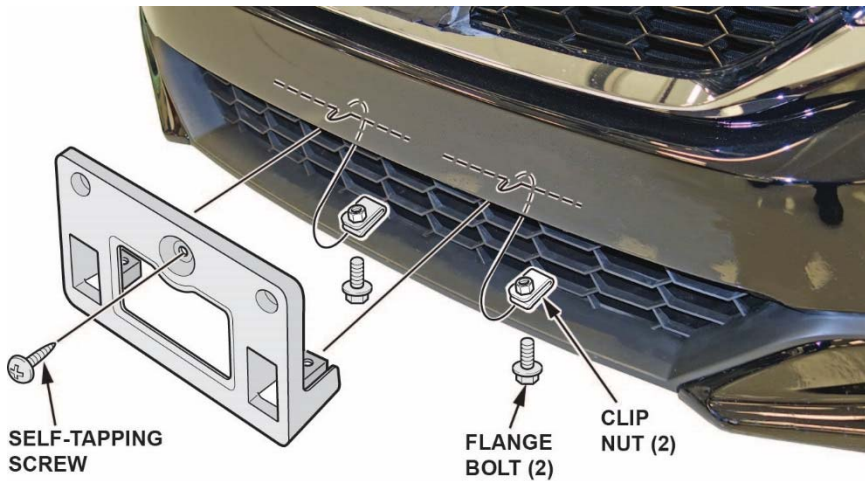
Install the body plugs as shown. These plugs are part of the noise-reduction package and play a big part in reducing road noise.



## Vehicle Exterior (Vehicle Lowered to Half-Height)

### 9. Install the Front License Plate Holder

If state regulations require the use of a front license plate, install the front license plate holder as shown.



## Vehicle Exterior (Vehicle Lowered to Ground)

### 10. Set the Tire Pressures

Set the tire pressures according to the driver's doorjamb label. Make sure the tires are at the same temperature as the outside air when checking and setting the pressures.

### 11. Start the TPMS Calibration Process

This vehicle has an indirect TPMS. Unlike other systems that directly measure air pressure, an indirect TPMS uses the VSA wheel speed sensors to monitor and compare tire characteristics while driving and determine when one or more tires are significantly underinflated.

To ensure proper operation, you must inflate all four tires to the cold inflation pressures listed on the driver's doorjamb label and start the TPMS calibration process during the PDI using this procedure:

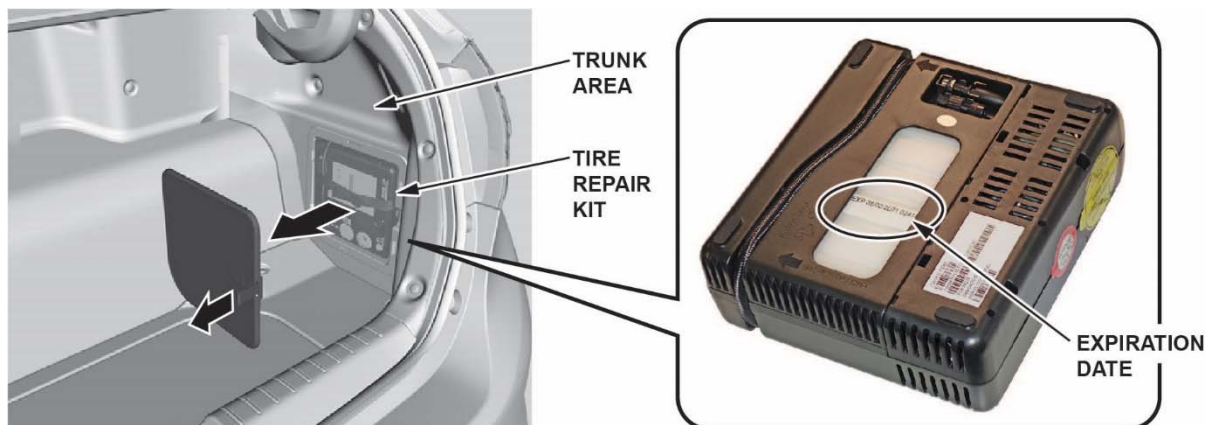
1. With the transmission in Park, turn the ignition to ON.
2. On the Display Audio screen, select **HOME**, then **Settings**.



3. Select **Vehicle**.
4. Select **TPMS Calibration**.
5. Select **Calibrate**. The message **TPMS has been initialized** will appear, and the screen will return to the customization menu screen. Once started, the calibration will complete on its own.

## 12. Check the Tire Repair Kit

This vehicle does not come with a spare tire. Make sure the tire repair kit is in place. Also, check the expiration date on the temporary repair sealant bottle, and make sure it is still good. Replace the sealant bottle if it has expired.



### Vehicle Interior

## 13. Install the SBW Shifter Assembly Cover

Install the cover onto the SBW shifter assembly by gently pressing it into place.

SBW SHIFTER ASSEMBLY COVER  
Stored in glove box.



## 14. Check Remote Climate Control Operation

On the remote transmitter, press the Lock button, then, within **5 seconds**, press and hold the Climate button. You should hear the climate control system come on. It will run for up to **30 minutes**. To turn off the system, press and hold the Climate button.

NOTE: This procedure will not work if the high-voltage lithium-ion battery is very low on charge. If needed, charge that battery first.

## 15. Check/Refresh the SiriusXM® Radio Dealer Demo Service

The audio system comes from the factory activated with the SiriusXM Radio dealer demo service. Once you install the No. 21 BACKUP (10 A) and No. 22 AUDIO (15 A) fuses, the system receives the full range of available channels. You can see a full list of available channels at [www.siriusxm.com](http://www.siriusxm.com).

While watching the Display Audio screen, tune to several channels within the full channel lineup. If you can tune to all of the channels, the dealer demo service is activated.

## 16. Check the ACC, LKAS, Collision Mitigation Braking System™, and Road Departure Mitigation Indicators

When you first turn the ignition to ON, these indicators should come on for a few seconds, then go off.

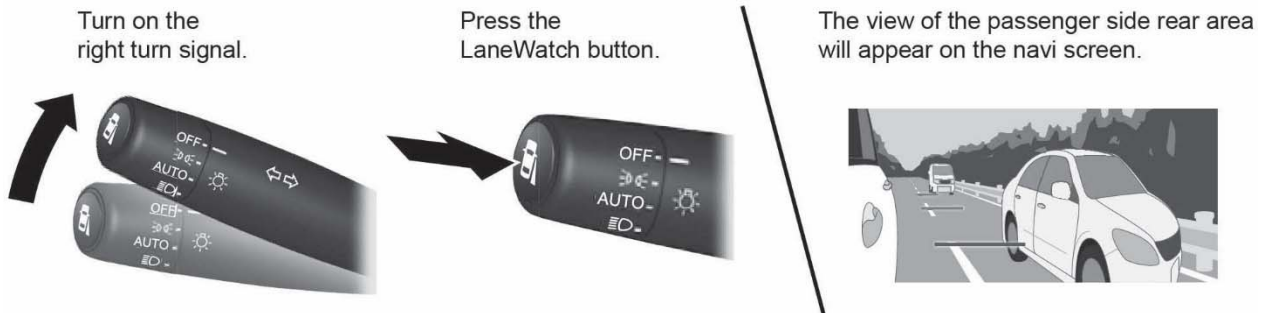
- ACC (Adaptive Cruise Control)
- LKAS (Lane Keeping Assist System) with Low Speed Follow
- Collision Mitigation Braking System
- Road Departure Mitigation

NOTE: If the MAIN button on the steering wheel was pressed, the ACC and LKAS indicators go from amber to green and stay on.



## 17. Make Sure LaneWatch® Works

Turn the ignition to ON. Press the button on the end of the combination switch to make sure LaneWatch works. Press the button again, and the LaneWatch view should go off. Activate the right turn signal, and the LaneWatch view should come on.



## 18. Check the Charge Timer Setting

This vehicle has a charge timer feature that lets you charge the vehicle at a specified time or timeframe. Make sure it is set to **OFF** before customer delivery.

1. Press the **HOME** icon on the Display Audio screen to ensure you are seeing the home screen.
2. Using the steering wheel remote control buttons, press the Information button to show the driver information interface items. Scroll through them using the left and right arrow buttons, then select **Vehicle Settings**, and press the ENTER button.



3. Select **Charge Timer Setup**, and press the ENTER button.



4. Check if the charge timer is set to **OFF**. If it is not, scroll up or down to select it, then press the ENTER button.



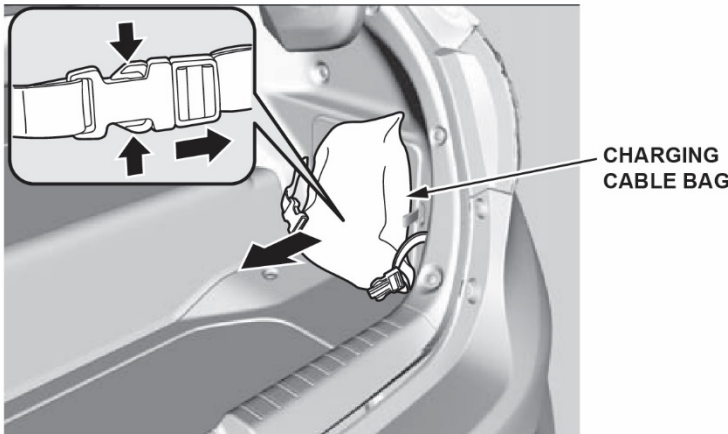
## 19. Check the Portable Charging Cable

The portable Level I, 120-volt charging cable stored in the trunk must be checked at the PDI to ensure it can properly charge the high-voltage lithium-ion battery.

NOTE: This is just an operational check. **Do not** use this charging cable to fully charge the battery; it is strictly for customer use.

To check the portable charging cable, follow these steps:

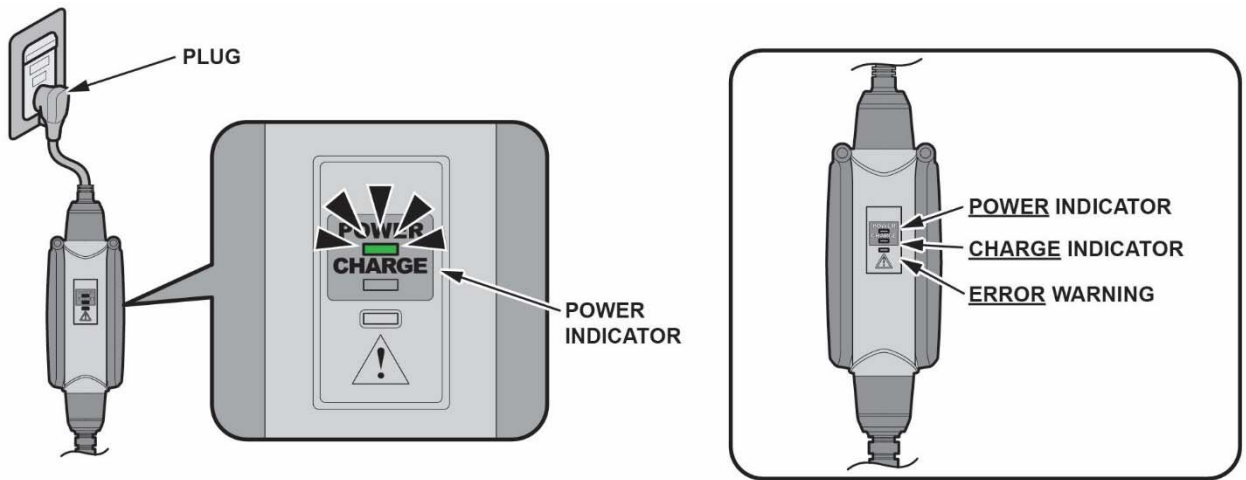
1. Release the strap, and remove the portable charging cable storage bag from the trunk. Take the cable out of the bag, and carefully unwrap it.



2. Insert the plug into a 120-volt, 15-amp wall outlet.

### NOTICE

To charge this battery, **always** plug directly into the specified wall outlet. **Do not** plug into an extension cord or power strip.



Timer On	Control Box LED Status Indicator			Charge Indicator	Explanatory notes ● Goes off ○ Stays on ☼Blinking
	POWER	CHARGE	⚠ (Error Warning)		
Initializing	○	○	○	●	Initial processing
Stand by	○	●	●	☼Slowly	Ready and waiting for the timer
Charge	○	○	●	○	Comes on during charge.
Completion	○	●	●	●	Charge end

Make sure the POWER LED status indicator on the charging cable control box comes on steady. If it blinks or does not come on at all, refer to the above chart.

3. Open the charge lid by pressing and holding the Charge Lid Release button on the dashboard or pressing and holding the HOLD button on the remote transmitter.



4. Line up the charging connector with its receptacle, then insert it until you hear it click. The green Charge indicator will go from blinking to steady when charging starts.



5. Make sure the POWER and CHARGE LED status indicators on the charging cable control box come on steady.
6. Remove the charging connector from the vehicle and the plug from the wall outlet.
7. Carefully repack the cable, and return it to its storage bag.
8. Return the storage bag to the trunk, and secure it with the strap.

## 20. Charge the High-Voltage Lithium-Ion Battery

The high-voltage lithium-ion battery should be charged **only** after all other PDI items are done. To save time, you can use a Level II 240-volt AC charger.

NOTE: **Do not** use the portable charging cable stored in the trunk to charge this battery; it is strictly for customer use. If needed, order one or more of these charging cables from Honda parts stock as a service tool for your shop. Order **P/N 1T210-5WJ-A01**.

Here are the estimated charging times using various charger types. All charging times are based on starting when the Low Charge indicator first comes on and with the outside air temperature being **77°F**.

Charger Type	Charging Time (Hours)
AC 240 Volt (Level II)	2.5 (full charge)
AC 120 Volt (Level I)	12.0 (full charge)

When charging is complete, the indicator will go off. When it does, remove the charging connector and close the charge lid.

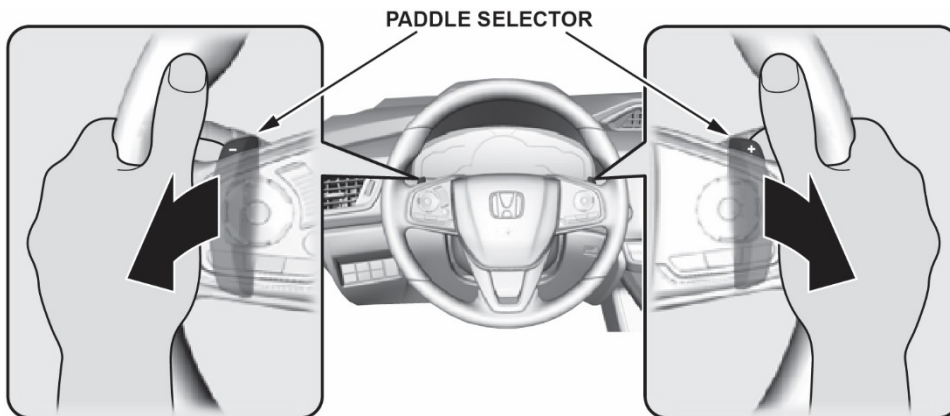
NOTE: Charging times will be longer as the temperature drops. You cannot charge the battery or start the engine below **-22°F**.

### NEW MODEL SERVICE INFORMATION

#### 1. Deceleration Paddle Selector

This vehicle comes with a deceleration paddle selector on the steering wheel. When you release the accelerator pedal, it lets you control your rate of deceleration without taking your hands off the wheel.

There are four stages of deceleration. To **increase** the deceleration stage, pull back on the **-** selector; to **decrease** it, pull back on the **+** selector; to cancel the deceleration paddle selector, pull the **+** selector for a few seconds.



Increase the deceleration stage by pulling back on the **-** paddle selector.

Decrease the deceleration stage by pulling back on the **+** paddle selector.

When going down a hill, you can use the deceleration paddle selector to help maintain the rate of deceleration. This lets you keep a safe distance between your vehicle and the one ahead as well as make use of engine braking. For details, see the owner's guide and online owner's manual.

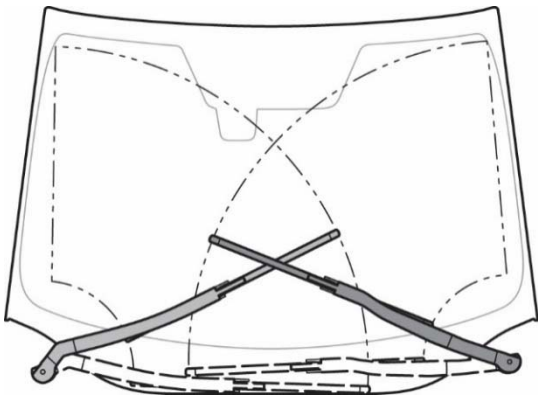
## 2. Charge Timer

This vehicle has a charge timer feature that lets you select a time or timeframe to begin charging the high-voltage lithium-ion battery. This is especially convenient for customers who live in areas where the electricity rates vary by time of day. With the charging connector plugged in, the battery will automatically begin charging at the selected time.



## 3. Windshield Wiper System

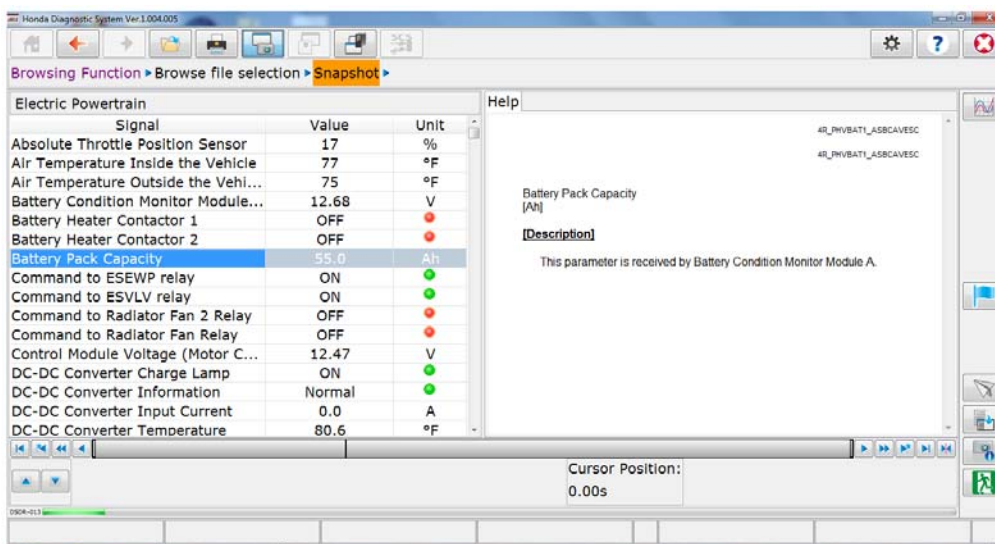
The windshield wiper system uses two motors. There is one motor for each wiper arm. If you move the wiper arm by hand with the wipers turned off, be careful not to damage the wiper when returning it to the glass. It is possible to drop the wiper arm onto the other one, damaging the wiper blade or the arm.



## 4. Checking Battery Pack Capacity

The high-voltage lithium-ion battery in this vehicle has an **8-year** or **100,000-mile** warranty. But unlike earlier vehicles with high-voltage batteries, this vehicle does not set a DTC when the battery pack capacity value has reached the level for battery replacement under warranty.

To check battery pack capacity in this vehicle, you must use the i-HDS. Just go to the **Electric Powertrain Data List**, and look at the **Battery Pack Capacity** signal. If its value reads **less than 36.6 Ah** and the battery is still under warranty, the battery is eligible for warranty replacement.



END